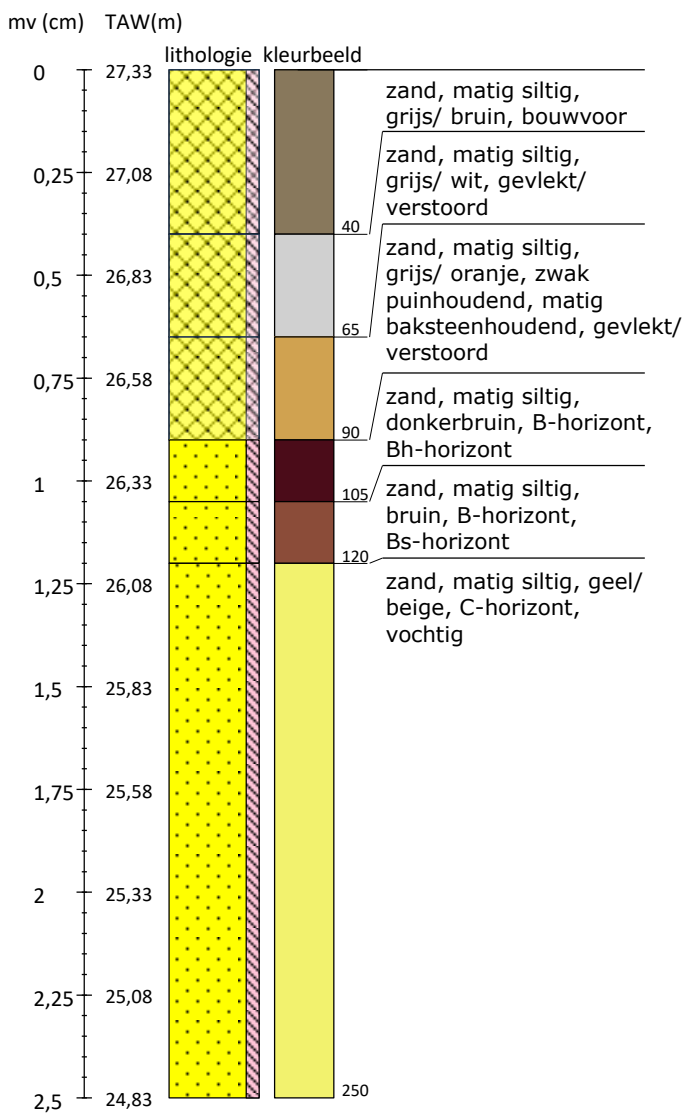
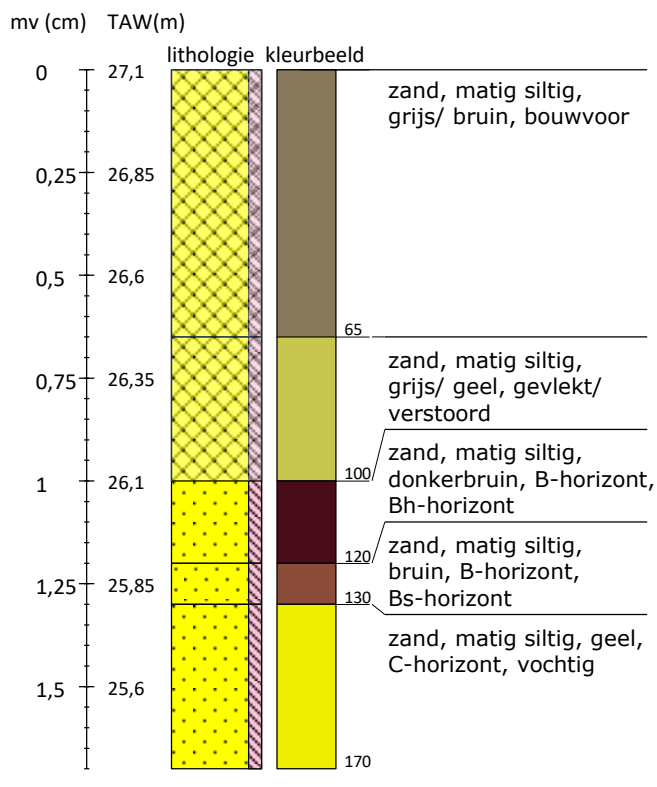


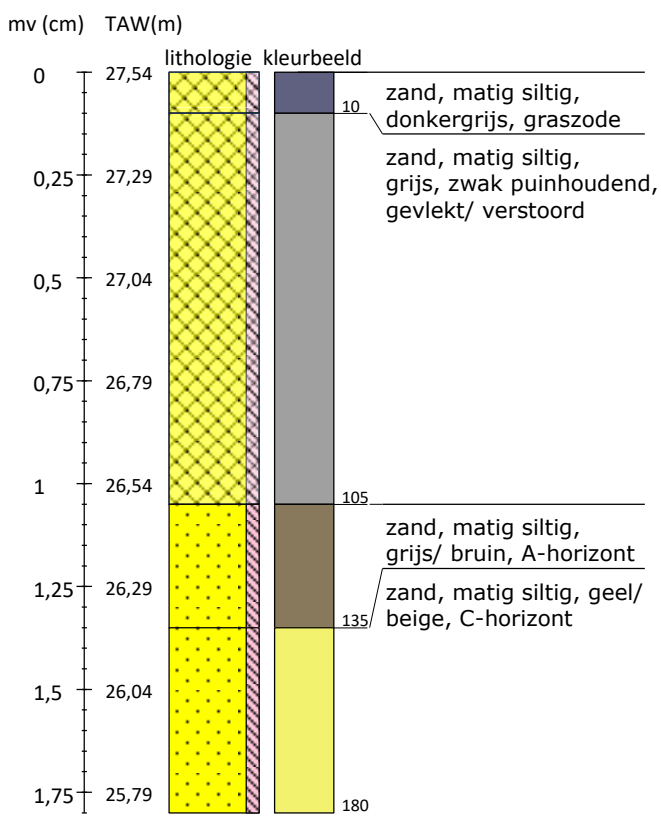
Boring 1 Lb 72-coördinaten: 200922/210085



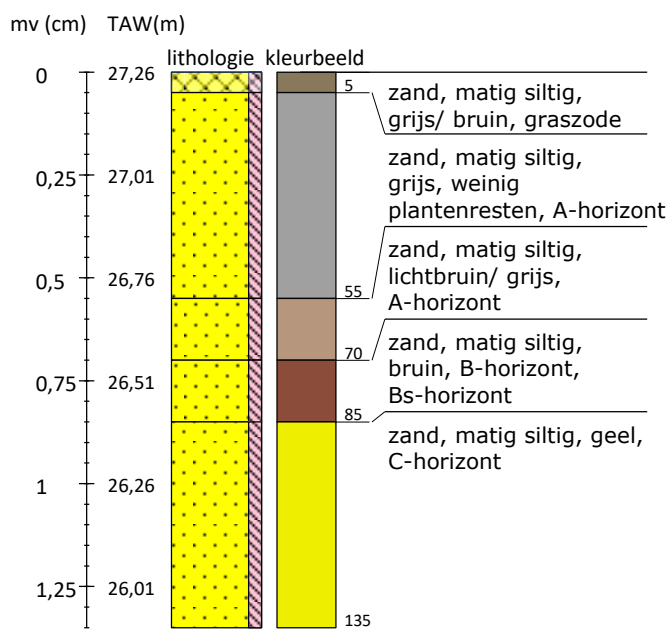
Boring 2 Lb 72-coördinaten: 200903/210101



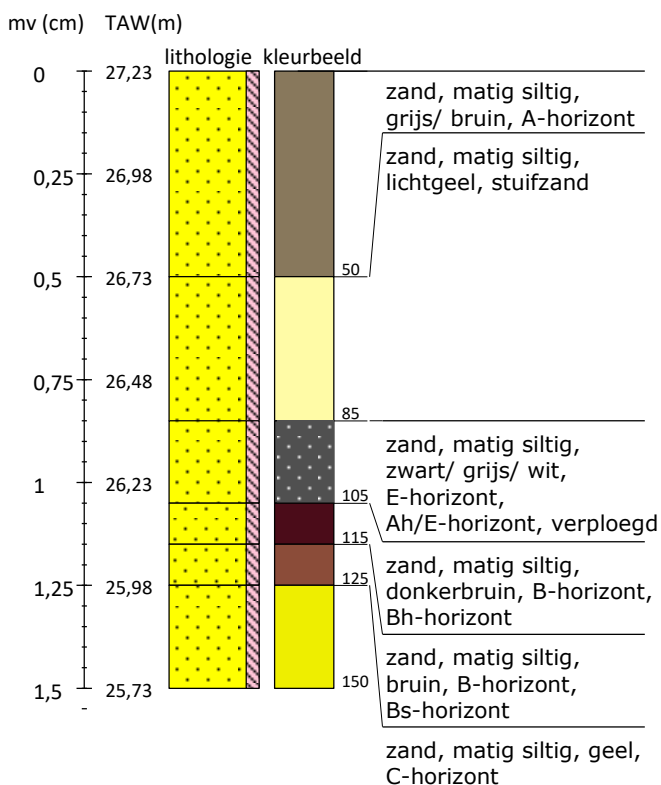
Boring 3 Lb 72-coördinaten: 200932/210108



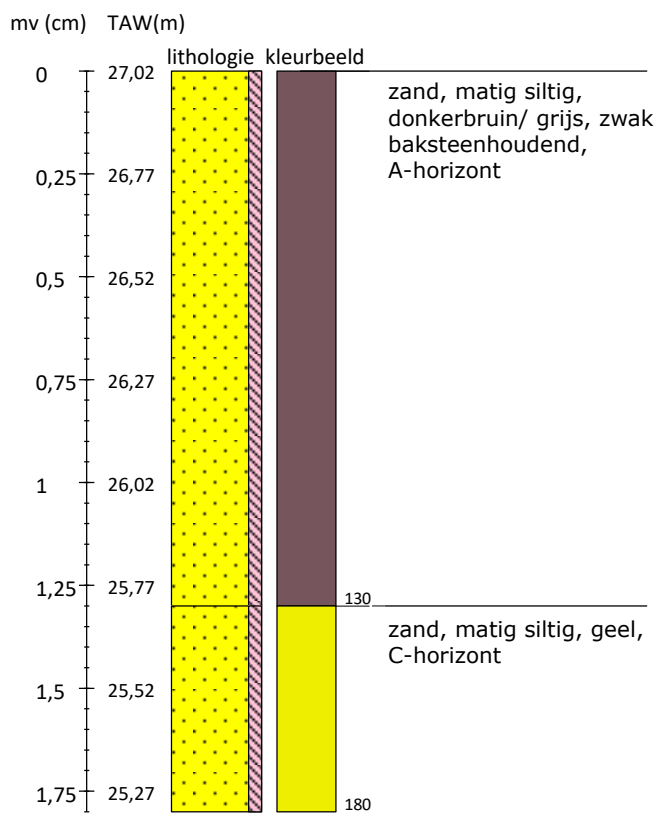
Boring 4 Lb 72-coördinaten: 200912/210124



Boring 5 Lb 72-coördinaten: 200893/210139

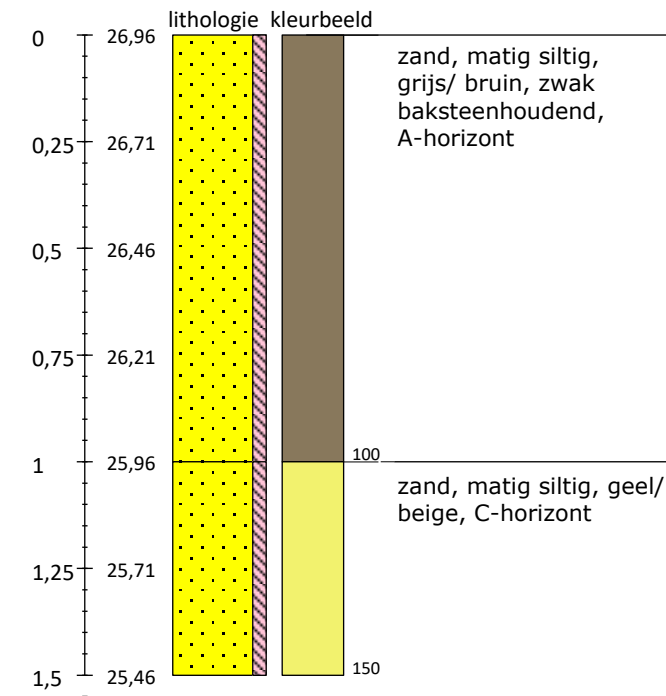


Boring 6 Lb 72-coördinaten: 200922/210147



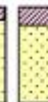

































Boring 7 Lb 72-coördinaten: 200941/210131

mv (cm) TAW(m)



**Legenda (conform NEN 5104, boorbeschrijvingsnorm van NITG-TNO en ASB)**

<b>Zand</b>     	<b>Veen</b>     	<b>Zandmediaan</b> uiterst fijn < 105 µm zeer fijn 105 - < 150 µm matig fijn 150 - < 210 µm matig grof 210 - < 300 µm zeer grof 300 - < 420 µm uiterst grof 420 - < 2000 µm  <b>Zandsortering</b> goed gesorteerd D60/D10 < 1,8 matig gesorteerd D60/D10 1,8 < 3 slecht gesorteerd D60/D10 > 3	<b>Boortype</b> Edelmanboor ø 7 cm Edelmanboor ø 10 cm Edelmanboor ø 12 cm Edelmanboor ø 15 cm Guts ø 2 cm Guts ø 3 cm Zuigerboor Riverside boor ø 7 cm
<b>Klei</b>       	<b>Grind</b>     	<b>Inclusies/archeologische indicatoren</b> (resten van planten, wortels, schelpen, wortels, hout, baksteen, puin, kolengruis, glas, aardewerk, houtskool, vuursteen, bot, fosfaat) weinig < 1% matig 1-10% veel > 10%	Mechanische boor ø 10 cm Mechanische boor ø 12 cm Mechanische boor ø 15 cm Mechanische boor ø 20 cm
<b>Leem</b>   	<b>Overige toevoegingen</b>      	<b>Begrenzing onderliggende laag</b> scherp overgangsgebied < 0,3 cm onscherp overgangsgebied 0,3 - < 3 cm diffuus overgangsgebied 3 cm - < 10 cm  <b>Kalkgehalte</b> kalkloos geen opbruising, minder dan 0,5% CaCO <sub>3</sub> kalkarm hoorbare opbruising, circa 0,5 - 1 à 2 % CaCO <sub>3</sub> kalkrijk zichtbare opbruising, 1 à 2% CaCO <sub>3</sub>	<b>Grondwaterstand</b> GHG  GWG  GLG   @ Boorstaten   - www.boorstaten.nl